

## PLANTA PPMS replaces MSP at Metabo



The existing Microsoft Project and Excel solution at Metabo will be replaced by PLANTA project management PPMS. The multi-project management system gives Metabo a competitive edge thanks to shorter development times and more efficient cost and deadline controlling.



The manufacturer of globally marketed power tools will plan its development costs with PPMS in the future. Metabo initially considered a custom solution - customizing of the MSP server version – but then abandoned this idea. PPMS won through with its superior price-performance ratio and better mapping of the Metabo processes. Other PM systems on the market were investigated. After the stand-alone solution is replaced, PPMS will provide the Metabo departments with real multi-project management with realistic resource and budget planning. Project costs will finally be available without delay via the interface to SAP. A forecast dependant on the project status will also be possible.

Metabo will use PPMS as a client-server system across the entire company for the planning of all development projects (up to 100 in parallel). Use will be extended to other locations and departments in 2009.

The multi-project management system enables ambitious goals to be achieved:

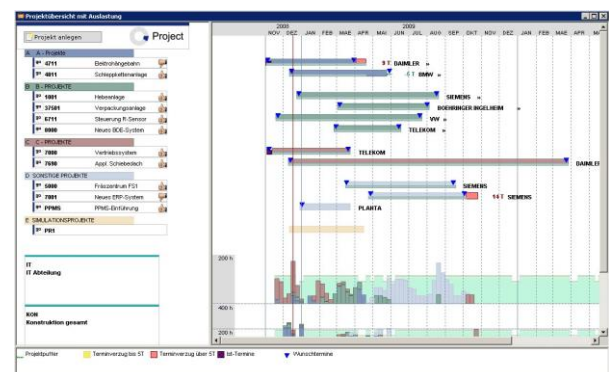
- Reduction in lead times in development processes
- Timely de-escalation of deadline conflicts
- Simplified status overviews
- More efficient resource planning
- Better communication between project team members
- Integration of project and portfolio management

Michael Keller, head of CAE and project center development at Metabo, is extremely satisfied:

“Since the implementation of PPMS, management has had an overview of the status of all current development projects and the degree of utilization of resources, project managers have a project controlling tool that meets their needs and project team members have an up-to-date view of the status of the project plan. A positive side-effect of the implementation of the PLANTA system: a data basis with uniform and consistent information for all those involved in product development.”

### Metabowerke GmbH

For more than 80 years, Metabo has been manufacturing power tools for trade and industry. With its own sales companies and subsidiaries, Metabo is represented in over 100 countries and has developed into a global brand.



Multi-project overview with resources utilisation in PLANTA Project Management PPMS

### Facts and figures on the use of PPMS at Metabowerke GmbH

- Approx. 150 employees in the company, of which 30 are PMs, 5 multi-PMs, 130 reporters
- 3 locations (head office Nürtingen, development in Meppen (from mid 2009), development in Shanghai (from the start of 2010)
- Implementation phase: 10 months (purchased in March 2008, productive operation from January 1, 2009), people involved: 4 employees, internal project center development at Metabo, external consultants: Move your mind, PLANTA
- Size of projects: 30 PMs plan 15 generic resources, resource managers plan 4-25 employees per department, with PPMS approx. 100 projects will be planned with a lead time of 9-48 months.



## Company Profile

PLANTA Projektmanagement-Systeme GmbH is one of the leading providers of enterprise project management software on the European market. For 35 years, PLANTA has been offering cross-industry software solutions for enterprise-wide project and portfolio management.

Today, PLANTA software is used in the areas of IT, research & development, engineering and plant construction, banks and insurance companies as well as automobile manufacturers and suppliers. With more than 540 company licenses and 50,000 users world wide, PLANTA continues to help its clients meet their project management goals.

## Company-Wide Project Management with PLANTA Software

**Keeping an Eye on Projects**

with  
 PLANTA *Project*  
 PLANTA *Portfolio*  
 PLANTA *Request*

Controlling of all projects in the enterprise from the project idea to the archived project

## Extract of List of Customers



### PLANTA Germany

PLANTA Projektmanagement-Systeme GmbH  
 Bunsenstr. 14 • 76135 Karlsruhe  
 Tel. +49 721 8281111 • info@planta.de  
[www.planta.de](http://www.planta.de)

### PLANTA Switzerland

PLANTA Projektmanagement-Systeme GmbH  
 Stadthausstr. 39 • 8400 Winterthur  
 Tel. +41 52 2690303 • info@planta-gmbh.ch  
[www.planta.de](http://www.planta.de)